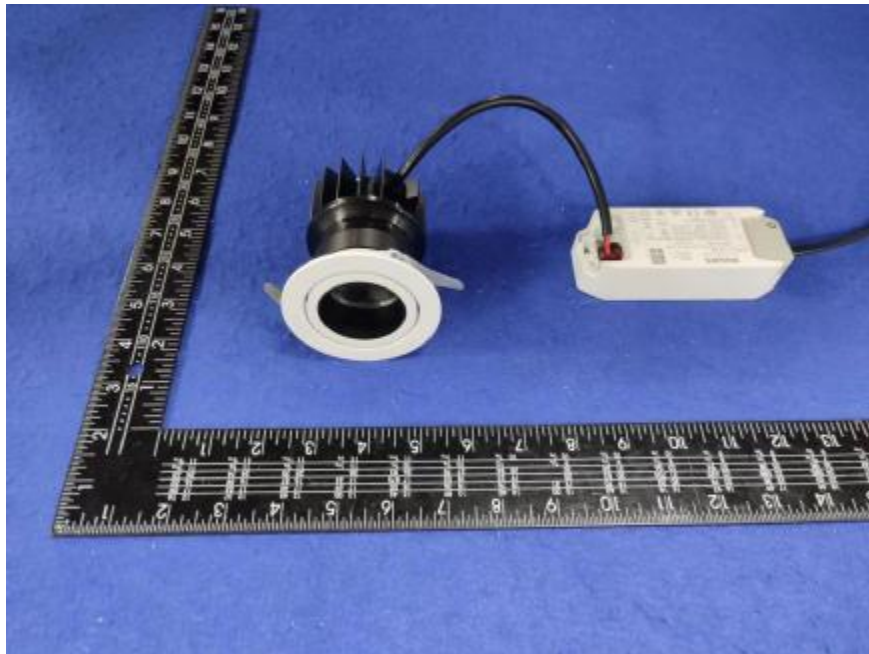


Luminaire Photograph



Light Output Ratio:	86.1%	
Luminaire Power:	16.41 W	
SHR Nominal:	0.00	Calculated using the TM5
SHR Maximum:	0.30	fine grid method.

C Range: 0 - 360DEG
C Interval: 30.0DEG
Test Speed: HIGH
Temperature: 25.3 °C
Operators: zoe
Test Date: 2023-9-16

Range: 0 - 180DEG
Interval: 1.0DEG
Test System: EVERFINE GO-SPEX500_V1 SYSTEM V2.00.461
Humidity: 65.0%
Test Distance: 3.160m [K=1.0000]
Remarks: LAMP: CMA1306-0000-000N0U0A30G Ra:90
LENS: PM-1083A 24R
DRIVER: 9290 028 088 350mA
30minutes warm-up

LUMINOUS INTENSITY DISTRIBUTION DIAGRAM

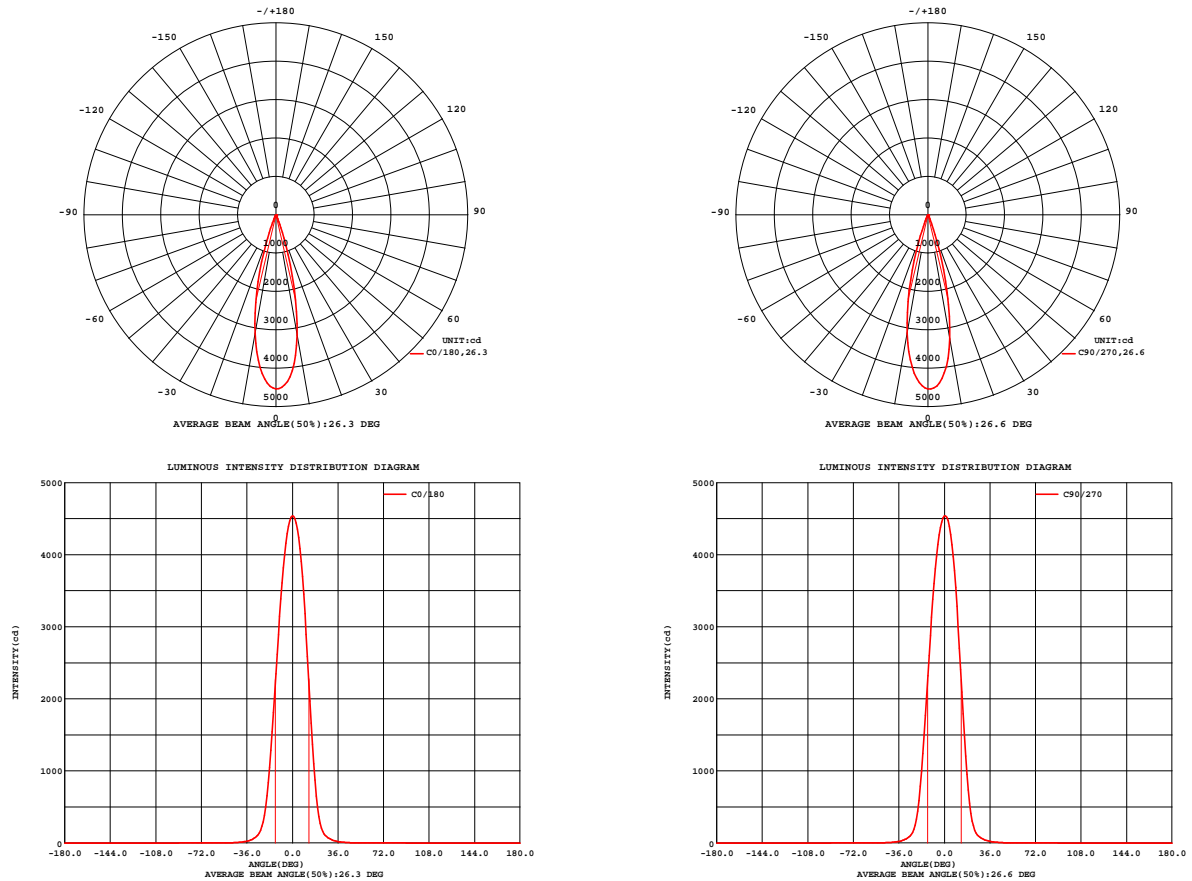


Fig. C0/C180

Fig. C90/C270

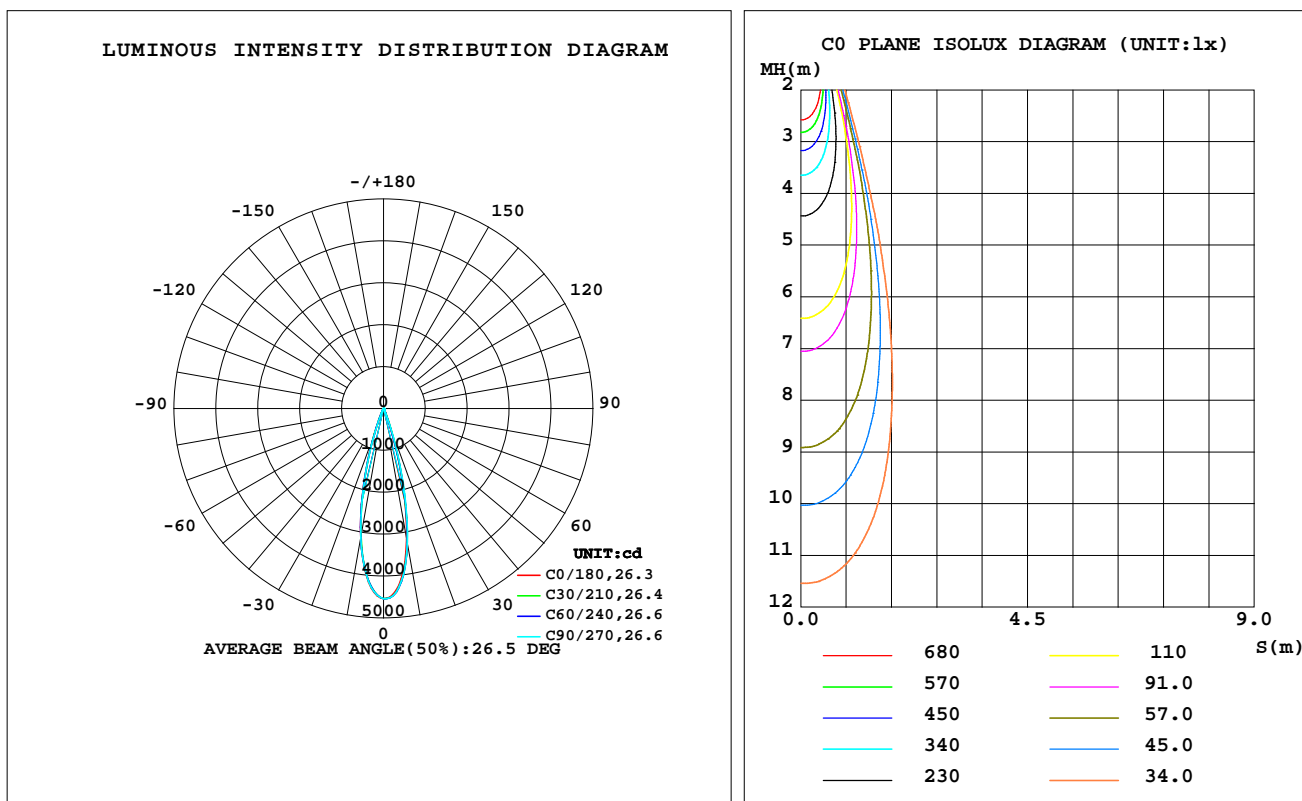
C Range: 0 - 360DEG
C Interval: 30.0DEG
Test Speed: HIGH
Temperature: 25.3 °C
Operators: zoe
Test Date: 2023-9-16

Range: 0 - 180DEG
Interval: 1.0DEG
Test System: EVERFINE GO-SPEX500_V1 SYSTEM V2.00.461
Humidity: 65.0%
Test Distance: 3.160m [K=1.0000]
Remarks: LAMP: CMA1306-0000-000N0U0A30G Ra: 90
LENS: PM-1083A 24R
DRIVER: 9290 028 088 350mA
30minutes warm-up

LUMINAIRE PHOTOMETRIC TEST REPORT

Test:U:220.02V I:0.0756A P:16.409W PF:0.9847 Freq:49.99Hz Lamp Flux:1099.47x1 lm		
NAME: 2118.574-ACOT-36	TYPE:	WEIGHT:
SPEC.: 3000K	DIM.:	SERIAL No.: 2309161163
MFR.: RISE	SUR.: 0.00138474m2	Shielding Angle:

DATA OF LAMP		PHOTOMETRIC DATA Eff: 57.70 lm/W			
MODEL	CREE	I _{max} (cd)	4538	S/MH(C0/180)	0.43
NOMINAL POWER(W)	16	LOR(%)	86.1	S/MH(C90/270)	0.43
RATED VOLTAGE(V)	220	TOTAL FLUX(lm)	946.83	UP,DN(C0-180)	0.0,43.1
NOMINAL FLUX(lm)	1099.47	CIE CLASS	DIRECT	UP,DN(C180-360)	0.0,43.0
LAMPS INSIDE	1	up(%)	0.0	CIBSE SHR NOM	0.00
TEST VOLTAGE(V)	220	down(%)	86.1	CIBSE SHR MAX	0.30



C Range: 0 - 360DEG
C Interval: 30.0DEG
Test Speed: HIGH
Temperature:25.3℃
Operators:zoe
Test Date:2023-9-16

Range: 0 - 180DEG
Interval: 1.0DEG
Test System:EVERFINE GO-SPEX500_V1 SYSTEM V2.00.461
Humidity:65.0%
Test Distance:3.160m [K=1.0000]
Remarks: LAMP:CMA1306-0000-000N0U0A30G Ra:90
LENS:PM-1083A 24R
DRIVER:9290 028 088 350mA
30minutes warm-up

ZONAL FLUX DIAGRAM

ZONAL FLUX DIAGRAM:

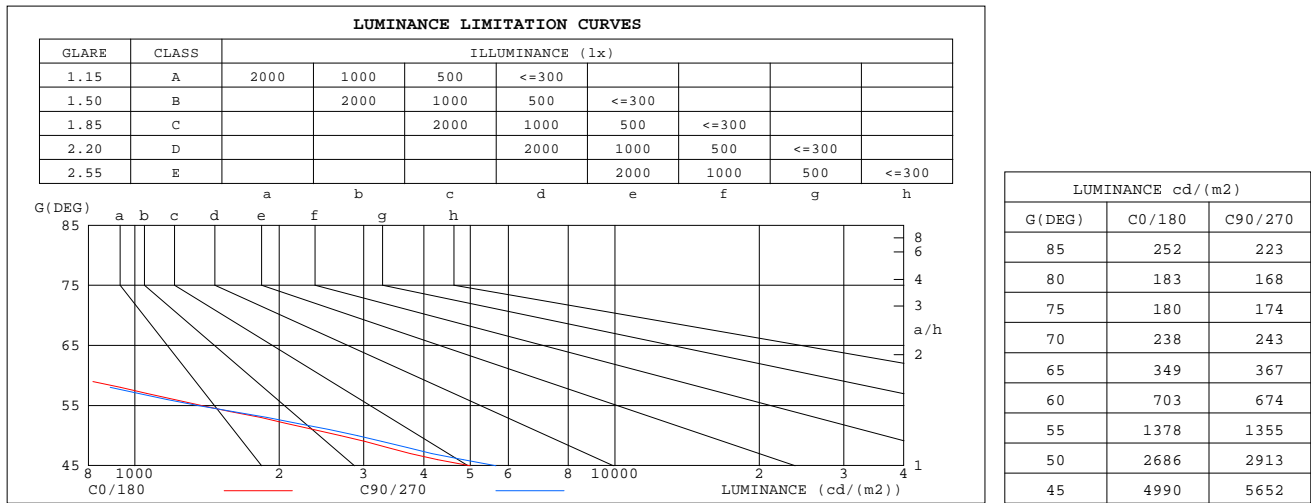
	C0	C45	C90	C135	C180	C225	C270	C315		zone	total	%lum,lamp
10	3183	3263	3285	3254	3145	3125	3132	3136	0- 10	369.1	369.1	39,33.6
20	488.9	513.1	551.1	595.6	653.4	649.5	587.4	519.2	10- 20	467.6	836.7	88.4,76.1
30	53.71	56.18	58.67	58.40	66.75	63.79	57.40	51.83	20- 30	86.48	923.2	97.5,84
40	10.89	11.71	12.31	12.29	13.16	12.64	11.85	10.94	30- 40	17.70	940.9	99.4,85.6
50	2.394	2.440	2.592	2.593	2.634	2.521	2.478	2.370	40- 50	4.540	945.4	99.9,86
60	0.4877	0.4357	0.4663	0.4774	0.4911	0.5085	0.4779	0.4624	50- 60	1.093	946.5	100,86.1
70	0.1131	0.1062	0.1151	0.1201	0.1298	0.1192	0.1180	0.1039	60- 70	0.2322	946.7	100,86.1
80	0.0442	0.0261	0.0403	0.0350	0.0491	0.0382	0.0453	0.0300	70- 80	0.0695	946.8	100,86.1
90	0	0	0	0	0	0	0	0	80- 90	0.0240	946.8	100,86.1
100	0	0	0	0	0	0	0	0	90-100	0	946.8	100,86.1
110	0	0	0	0	0	0	0	0	100-110	0	946.8	100,86.1
120	0	0	0	0	0	0	0	0	110-120	0	946.8	100,86.1
130	0	0	0	0	0	0	0	0	120-130	0	946.8	100,86.1
140	0	0	0	0	0	0	0	0	130-140	0	946.8	100,86.1
150	0	0	0	0	0	0	0	0	140-150	0	946.8	100,86.1
160	0	0	0	0	0	0	0	0	150-160	0	946.8	100,86.1
170	0	0	0	0	0	0	0	0	160-170	0	946.8	100,86.1
180	0	0	0	0	0	0	0	0	170-180	0	946.8	100,86.1
DEG	LUMINOUS INTENSITY:cd									UNIT:lm		

C Range: 0 - 360DEG
C Interval: 30.0DEG
Test Speed: HIGH
Temperature:25.3℃
Operators:zoe
Test Date:2023-9-16

Range: 0 - 180DEG
Interval: 1.0DEG
Test System:EVERFINE GO-SPEX500_V1 SYSTEM V2.00.461
Humidity:65.0%
Test Distance:3.160m [K=1.0000]
Remarks: LAMP:CMA1306-0000-000N0U0A30G Ra:90
LENS:PM-1083A 24R
DRIVER:9290 028 088 350mA
30minutes warm-up

LUMINANCE LIMITATION CURVES

Test:U:220.02V I:0.0756A P:16.409W PF:0.9847 Freq:49.99Hz Lamp Flux:1099.47x1 lm		
NAME: 2118.574-ACOT-36	TYPE:	WEIGHT:
SPEC.: 3000K	DIM.:	SERIAL No.: 2309161163
MFR.: RISE	SUR.: 0.00138474m2	Shielding Angle:



C Range: 0 - 360DEG
C Interval: 30.0DEG
Test Speed: HIGH
Temperature:25.3℃
Operators:zoe
Test Date:2023-9-16

Range: 0 - 180DEG
Interval: 1.0DEG
Test System:EVERFINE GO-SPEX500_V1 SYSTEM V2.00.461
Humidity:65.0%
Test Distance:3.160m [K=1.0000]
Remarks: LAMP:CMA1306-0000-000N0U0A30G Ra:90
LENS:PM-1083A 24R
DRIVER:9290 028 088 350mA
30minutes warm-up

CU AND LUMINAIRE BUDGETARY ESTIMATE DIAGRAM

Test:U:220.02V I:0.0756A P:16.409W PF:0.9847 Freq:49.99Hz
Lamp Flux:1099.47x1 lm

NAME: 2118.574-ACOT-36

TYPE:

WEIGHT:

SPEC.: 3000K

DIM.:

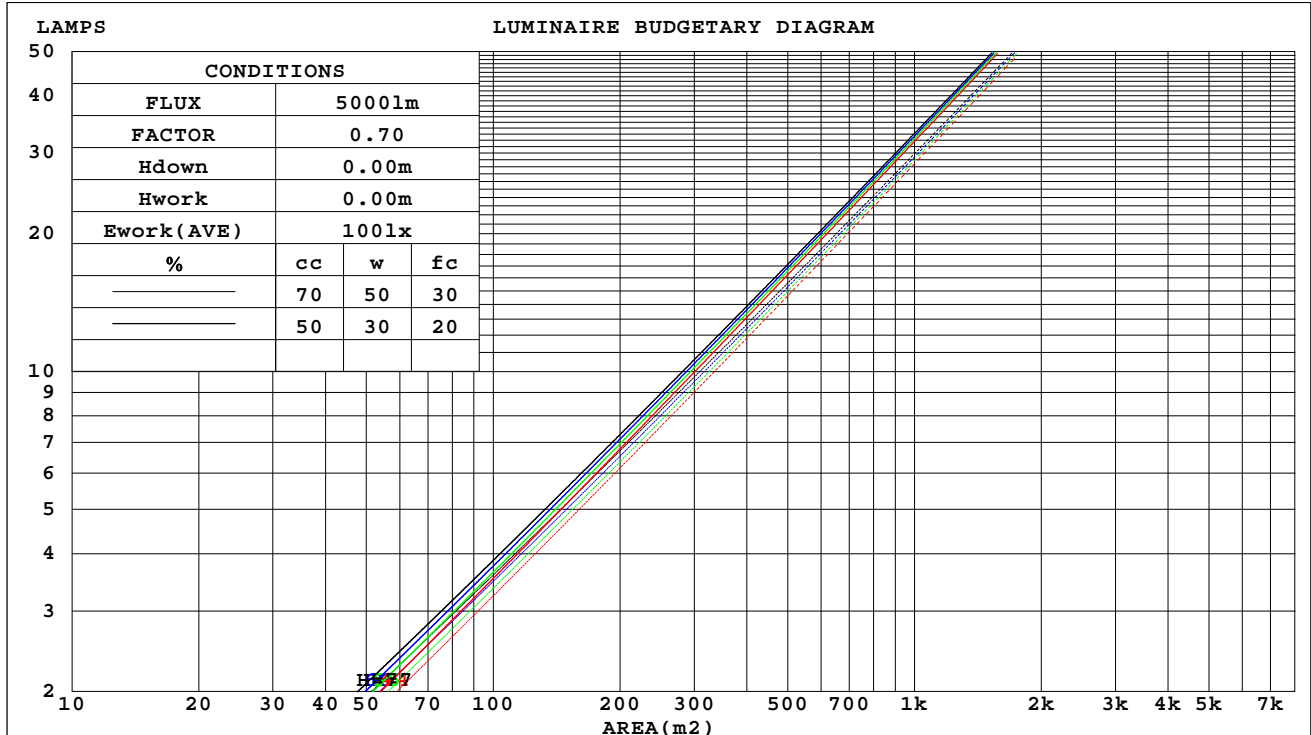
SERIAL No.: 2309161163

MFR.: RISE

SUR.: 0.00138474m2

Shielding Angle:

cc	80%			70%			50%			30%			10%			0
w	50%	30%	10%	50%	30%	10%	50%	30%	10%	50%	30%	10%	50%	30%	10%	0
fc	20%			20%			20%			20%			20%			0
RCR	RCR:Room Cavity Ratio															



C Range: 0 - 360DEG
C Interval: 30.0DEG
Test Speed: HIGH
Temperature:25.3℃
Operators:zoe
Test Date:2023-9-16

Range: 0 - 180DEG
Interval: 1.0DEG
Test System:EVERFINE GO-SPEX500_V1 SYSTEM V2.00.461
Humidity:65.0%
Test Distance:3.160m [K=1.0000]
Remarks: LAMP:CMA1306-0000-000N0U0A30G Ra:90
LENS:PM-1083A 24R
DRIVER:9290 028 088 350mA
30minutes warm-up

WEC AND CCEC

Test:U:220.02V I:0.0756A P:16.409W PF:0.9847 Freq:49.99Hz Lamp Flux:1099.47x1 lm		
NAME: 2118.574-ACOT-36	TYPE:	WEIGHT:
SPEC.: 3000K	DIM.:	SERIAL No.: 2309161163
MFR.: RISE	SUR.: 0.00138474m2	Shielding Angle:

cc	80%			70%			50%			30%			10%			0
w	50%	30%	10%	50%	30%	10%	50%	30%	10%	50%	30%	10%	50%	30%	10%	0
fc	20%			20%			20%			20%			20%			0
RCR	RCR:Room Cavity Ratio						Wall Exitance Coefficients(WEC)									
0.0																
1.0	.112	.064	.020	.106	.061	.019	.096	.055	.018	.086	.049	.016	.077	.044	.014	
2.0	.103	.056	.017	.098	.054	.017	.090	.050	.015	.082	.046	.014	.074	.042	.013	
3.0	.095	.051	.015	.092	.049	.015	.084	.046	.014	.078	.043	.013	.071	.040	.012	
4.0	.089	.046	.014	.086	.045	.013	.080	.042	.013	.074	.040	.012	.069	.037	.011	
5.0	.084	.043	.012	.081	.042	.012	.076	.040	.012	.071	.037	.011	.067	.036	.011	
6.0	.079	.040	.011	.077	.039	.011	.072	.037	.011	.068	.035	.010	.064	.034	.010	
7.0	.075	.037	.011	.073	.036	.010	.069	.035	.010	.066	.034	.010	.062	.032	.009	
8.0	.071	.035	.010	.070	.034	.010	.066	.033	.009	.063	.032	.009	.060	.031	.009	
9.0	.068	.033	.009	.067	.032	.009	.064	.032	.009	.061	.031	.009	.058	.030	.009	
10.0	.065	.031	.009	.064	.031	.009	.061	.030	.008	.059	.029	.008	.057	.028	.008	

cc	80%			70%			50%			30%			10%			0
w	50%	30%	10%	50%	30%	10%	50%	30%	10%	50%	30%	10%	50%	30%	10%	0
fc	20%			20%			20%			20%			20%			0
RCR	RCR:Room Cavity Ratio			Ceiling Cavity Exitance Coefficients(CCEC)												
0.0	.164	.164	.164	.140	.140	.140	.096	.096	.096	.055	.055	.055	.018	.018	.018	
1.0	.145	.136	.128	.124	.117	.110	.085	.080	.076	.049	.046	.044	.016	.015	.014	
2.0	.129	.114	.102	.110	.098	.088	.075	.068	.062	.044	.040	.036	.014	.013	.012	
3.0	.115	.098	.083	.099	.084	.072	.068	.058	.051	.039	.034	.030	.013	.011	.010	
4.0	.104	.084	.069	.089	.073	.060	.061	.051	.042	.036	.030	.025	.011	.010	.008	
5.0	.095	.073	.058	.081	.064	.050	.056	.044	.035	.033	.026	.021	.010	.009	.007	
6.0	.087	.065	.049	.075	.056	.042	.052	.039	.030	.030	.023	.018	.010	.008	.006	
7.0	.080	.058	.042	.069	.050	.036	.048	.035	.026	.028	.021	.015	.009	.007	.005	
8.0	.075	.052	.036	.064	.045	.031	.044	.031	.022	.026	.019	.013	.008	.006	.004	
9.0	.070	.047	.031	.060	.041	.027	.042	.029	.019	.024	.017	.012	.008	.006	.004	
10.0	.065	.043	.027	.056	.037	.024	.039	.026	.017	.023	.015	.010	.007	.005	.003	

C Range: 0 - 360DEG
C Interval: 30.0DEG
Test Speed: HIGH
Temperature:25.3℃
Operators:zoe
Test Date:2023-9-16

Range: 0 - 180DEG
Interval: 1.0DEG
Test System:EVERFINE GO-SPEX500_V1 SYSTEM V2.00.461
Humidity:65.0%
Test Distance:3.160m [K=1.0000]
Remarks: LAMP:CMA1306-0000-000N0U0A30G Ra:90
LENS:PM-1083A 24R
DRIVER:9290 028 088 350mA
30minutes warm-up

UGR(Unified Glare Rating) Table

Test:U:220.02V I:0.0756A P:16.409W PF:0.9847 Freq:49.99Hz Lamp Flux:1099.47x1 lm										
NAME: 2118.574-ACOT-36					TYPE:			WEIGHT:		
SPEC.: 3000K					DIM.:			SERIAL No.: 2309161163		
MFR.: RISE					SUR.: 0.00138474m2			Shielding Angle:		
ceiling/cavity	0.7	0.7	0.5	0.5	0.3	0.7	0.7	0.5	0.5	0.3
walls	0.5	0.3	0.5	0.3	0.3	0.5	0.3	0.5	0.3	0.3
working plane	0.2	0.2	0.2	0.2	0.2	0.2	0.2	0.2	0.2	0.2
Room dimensions	Viewed crosswise					Viewed endwise				
x = 2H y = 2H	5.7	6.3	5.9	6.4	6.6	6.0	6.6	6.2	6.8	6.9
3H	5.5	6.1	5.8	6.3	6.5	5.9	6.4	6.1	6.6	6.8
4H	5.5	6.0	5.7	6.2	6.4	5.8	6.3	6.0	6.5	6.7
6H	5.4	5.9	5.7	6.1	6.4	5.7	6.2	6.0	6.5	6.7
8H	5.3	5.8	5.6	6.1	6.3	5.7	6.2	6.0	6.4	6.7
12H	5.3	5.8	5.6	6.0	6.3	5.6	6.1	5.9	6.4	6.6
4H 2H	5.5	6.0	5.7	6.2	6.4	5.8	6.3	6.1	6.5	6.7
3H	5.3	5.8	5.6	6.0	6.3	5.6	6.1	5.9	6.4	6.6
4H	5.2	5.6	5.5	5.9	6.2	5.5	6.0	5.9	6.3	6.6
6H	5.1	5.5	5.5	5.8	6.2	5.4	5.8	5.8	6.2	6.5
8H	5.1	5.4	5.4	5.8	6.1	5.4	5.7	5.8	6.1	6.5
12H	5.0	5.3	5.4	5.7	6.1	5.3	5.7	5.7	6.0	6.4
8H 4H	5.1	5.4	5.4	5.8	6.1	5.4	5.7	5.8	6.1	6.5
6H	4.9	5.2	5.4	5.6	6.0	5.3	5.6	5.7	6.0	6.4
8H	4.9	5.1	5.3	5.6	6.0	5.2	5.5	5.7	5.9	6.3
12H	4.8	5.1	5.3	5.5	6.0	5.1	5.4	5.6	5.8	6.3
12H 4H	5.0	5.3	5.4	5.7	6.1	5.3	5.7	5.7	6.0	6.4
6H	4.9	5.1	5.3	5.6	6.0	5.2	5.5	5.7	5.9	6.3
8H	4.8	5.0	5.3	5.5	6.0	5.1	5.4	5.6	5.8	6.3
Variations with the observer position at spacings(CIE Pub.117):										
S = 1.0H	+ 3.2 / -10.5					+ 3.6 / -11.3				
1.5H	+ 5.2 / - 8.1					+ 5.6 / - 8.8				
2.0H	+ 5.7 / - 8.8					+ 6.3 / - 9.0				

CIE Pub.117, 1099 lm Total Lamp Luminous Flux Correct (8log(F/F0) = 0.3)
Area: 0.00138474 m2

C Range: 0 - 360DEG
C Interval: 30.0DEG
Test Speed: HIGH
Temperature:25.3℃
Operators:zoe
Test Date:2023-9-16

Range: 0 - 180DEG
Interval: 1.0DEG
Test System:EVERFINE GO-SPEX500_V1 SYSTEM V2.00.461
Humidity:65.0%
Test Distance:3.160m [K=1.0000]
Remarks: LAMP:CMA1306-0000-000N0U0A30G Ra:90
LENS:PM-1083A 24R
DRIVER:9290 028 088 350mA
30minutes warm-up

UTILIZATION FACTORS TABLE

Test:U:220.02V I:0.0756A P:16.409W PF:0.9847 Freq:49.99Hz Lamp Flux:1099.47x1 lm		
NAME: 2118.574-ACOT-36	TYPE:	WEIGHT:
SPEC.: 3000K	DIM.:	SERIAL No.: 2309161163
MFR.: RISE	SUR.: 0.00138474m2	Shielding Angle:

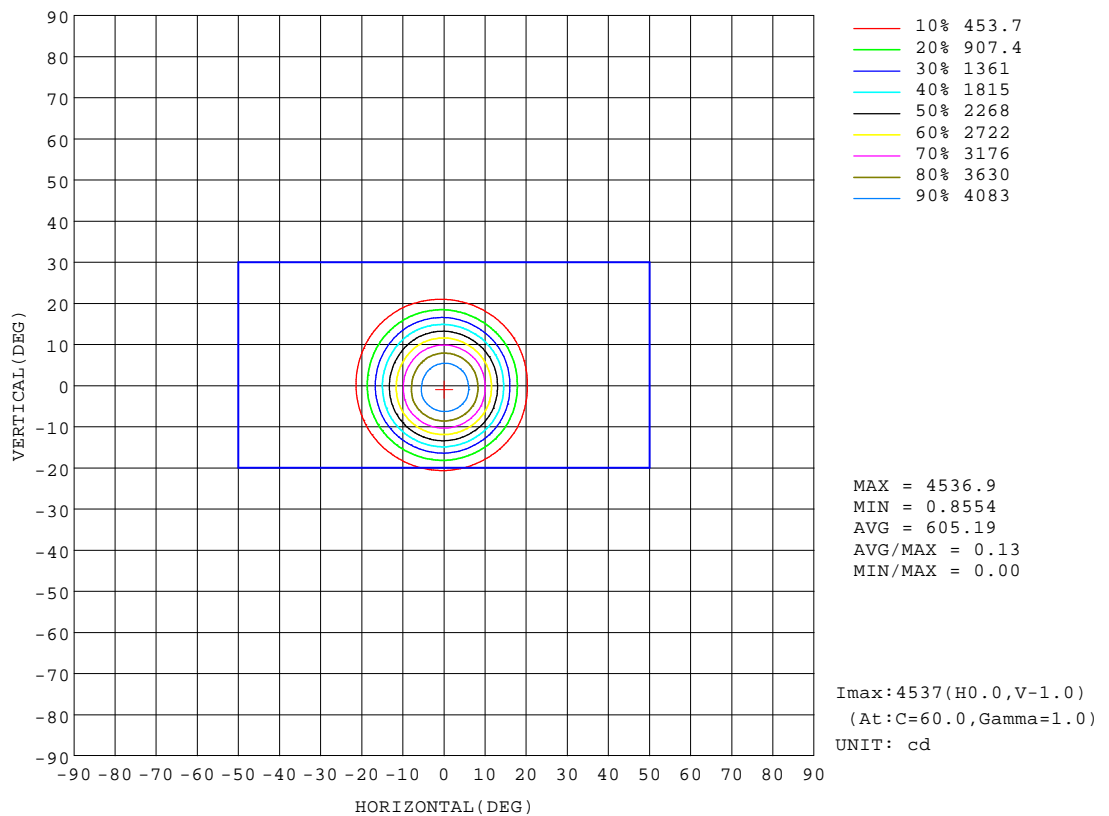
REFLECTANCE										
Ceiling	0.8	0.8	0.8	0.7	0.7	0.7	0.5	0.5	0.5	0
Walls	0.7	0.5	0.3	0.7	0.5	0.3	0.7	0.5	0.3	0
Working plane	0.2	0.2	0.2	0.2	0.2	0.2	0.2	0.2	0.2	0
ROOM INDEX	UTILIZATION FACTORS(PERCENT) $k(RI) \times RCR = 5$									
k = 0.60	79	74	71	78	74	71	77	73	71	68
0.80	84	80	77	84	80	77	83	79	77	74
1.00	88	83	81	87	83	80	86	83	80	77
1.25	91	87	84	90	86	84	88	85	83	80
1.50	93	89	87	92	89	86	90	87	85	82
2.00	95	91	89	93	91	88	91	89	87	83
2.50	96	93	91	95	92	90	92	90	88	83
3.00	97	94	92	96	93	91	93	91	89	84
4.00	99	97	95	97	95	94	94	92	91	85
5.00	100	98	97	98	96	95	95	93	93	86
ROOM INDEX	UF(total)									Direct
According to DIN EN 13032-2 2004			Suspended					SHRNOM = 1.25		

C Range: 0 - 360DEG
C Interval: 30.0DEG
Test Speed: HIGH
Temperature:25.3℃
Operators:zoe
Test Date:2023-9-16

Range: 0 - 180DEG
Interval: 1.0DEG
Test System:EVERFINE GO-SPEX500_V1 SYSTEM V2.00.461
Humidity:65.0%
Test Distance:3.160m [K=1.0000]
Remarks: LAMP:CMA1306-0000-000N0U0A30G Ra:90
LENS:PM-1083A 24R
DRIVER:9290 028 088 350mA
30minutes warm-up

ISOCANDELA DIAGRAM

Test:U:220.02V I:0.0756A P:16.409W PF:0.9847 Freq:49.99Hz Lamp Flux:1099.47x1 lm		
NAME: 2118.574-ACOT-36	TYPE:	WEIGHT:
SPEC.: 3000K	DIM.:	SERIAL No.: 2309161163
MFR.: RISE	SUR.: 0.00138474m2	Shielding Angle:

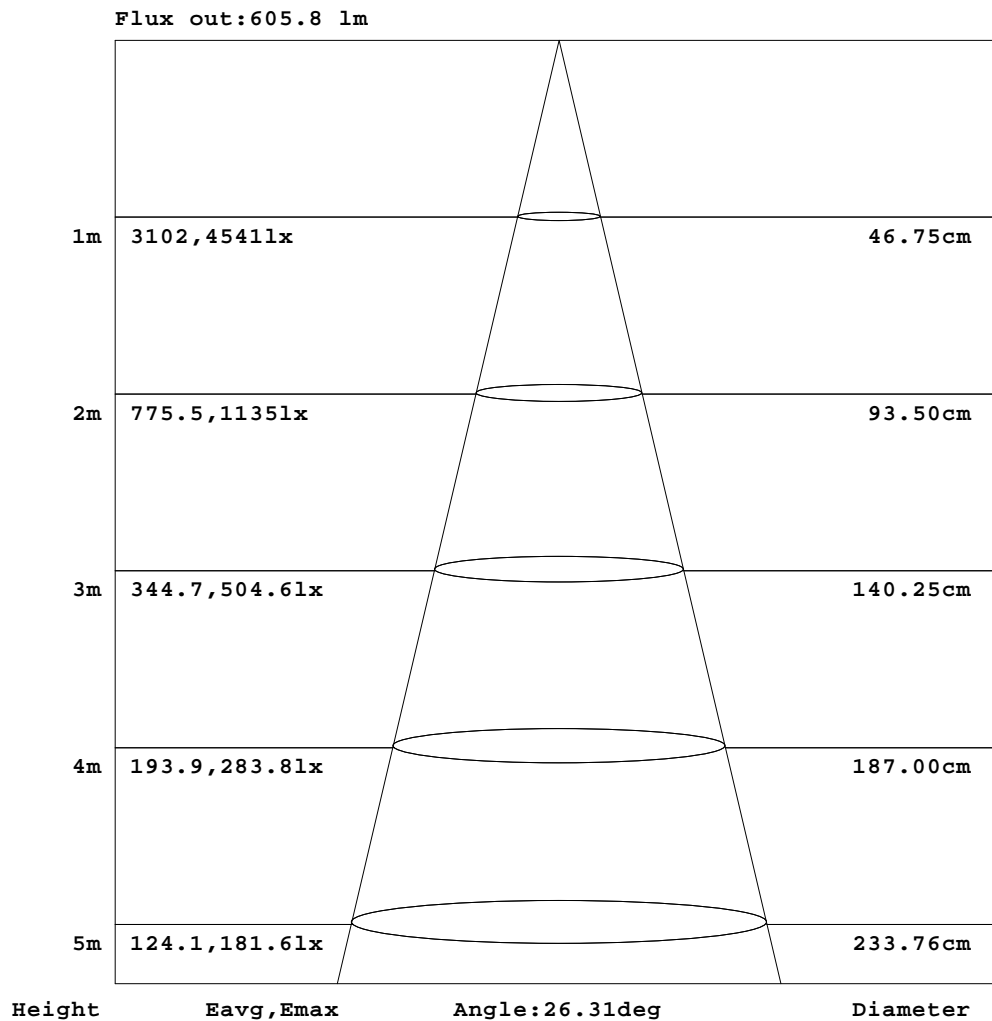


C Range: 0 - 360DEG
C Interval: 30.0DEG
Test Speed: HIGH
Temperature:25.3℃
Operators:zoe
Test Date:2023-9-16

Range: 0 - 180DEG
Interval: 1.0DEG
Test System:EVERFINE GO-SPEX500_V1 SYSTEM V2.00.461
Humidity:65.0%
Test Distance:3.160m [K=1.0000]
Remarks: LAMP:CMA1306-0000-000N0U0A30G Ra:90
LENS:PM-1083A 24R
DRIVER:9290 028 088 350mA
30minutes warm-up

AAI Figure

Test:U:220.02V I:0.0756A P:16.409W PF:0.9847 Freq:49.99Hz Lamp Flux:1099.47x1 lm		
NAME: 2118.574-ACOT-36	TYPE:	WEIGHT:
SPEC.: 3000K	DIM.:	SERIAL No.: 2309161163
MFR.: RISE	SUR.: 0.00138474m2	Shielding Angle:



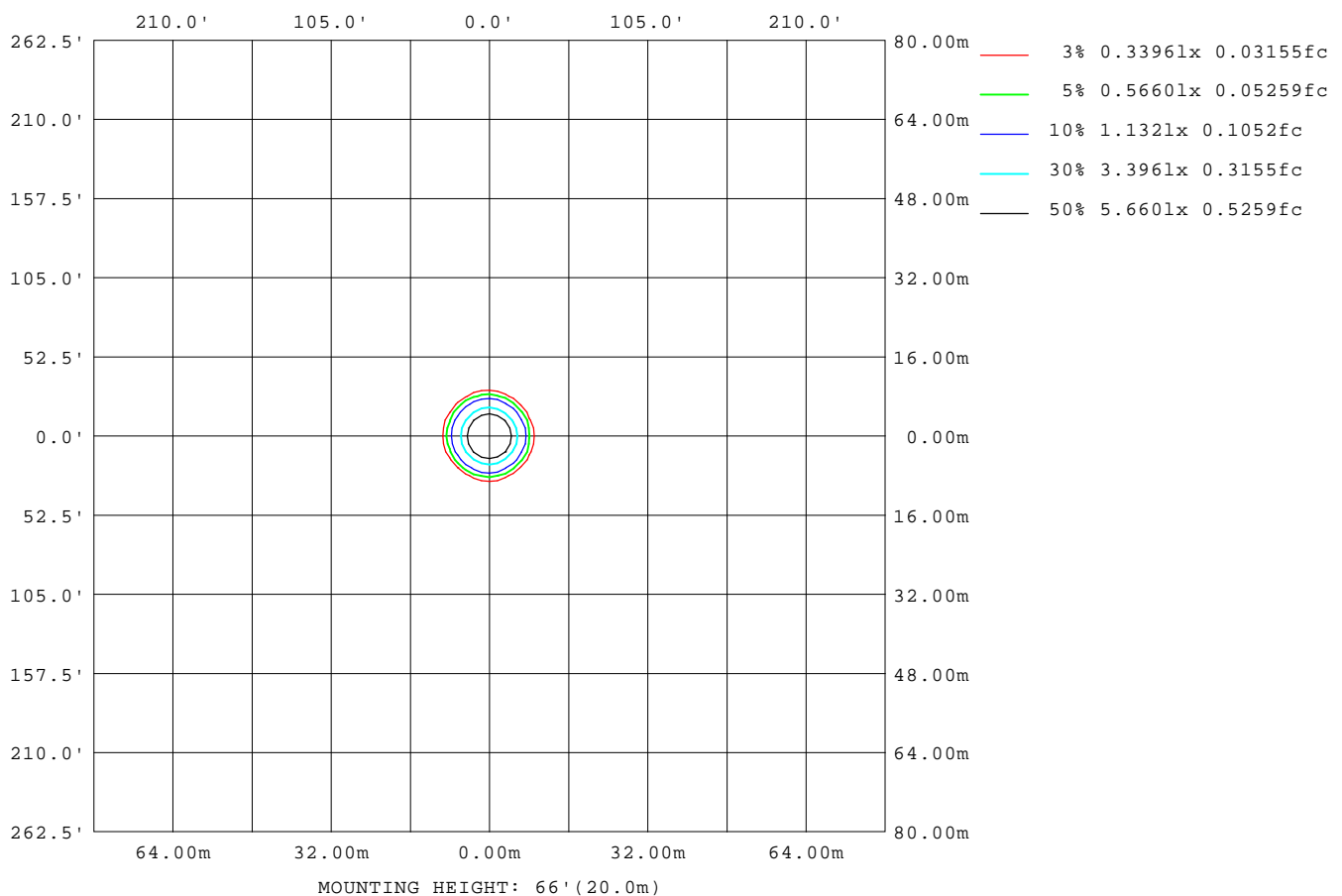
Note:The Curves indicate the illuminated area and the average illumination when the luminaire is at different distance.

C Range: 0 - 360DEG
C Interval: 30.0DEG
Test Speed: HIGH
Temperature:25.3℃
Operators:zoe
Test Date:2023-9-16

Range: 0 - 180DEG
Interval: 1.0DEG
Test System:EVERFINE GO-SPEX500_V1 SYSTEM V2.00.461
Humidity:65.0%
Test Distance:3.160m [K=1.0000]
Remarks: LAMP:CMA1306-0000-000N0U0A30G Ra:90
LENS:PM-1083A 24R
DRIVER:9290 028 088 350mA
30minutes warm-up

ISOLUX DIAGRAM

Test:U:220.02V I:0.0756A P:16.409W PF:0.9847 Freq:49.99Hz Lamp Flux:1099.47x1 lm		
NAME: 2118.574-ACOT-36	TYPE:	WEIGHT:
SPEC.: 3000K	DIM.:	SERIAL No.: 2309161163
MFR.: RISE	SUR.: 0.00138474m2	Shielding Angle:



C Range: 0 - 360DEG
C Interval: 30.0DEG
Test Speed: HIGH
Temperature:25.3℃
Operators:zoe
Test Date:2023-9-16

Range: 0 - 180DEG
Interval: 1.0DEG
Test System:EVERFINE GO-SPEX500_V1 SYSTEM V2.00.461
Humidity:65.0%
Test Distance:3.160m [K=1.0000]
Remarks: LAMP:CMA1306-0000-000N0U0A30G Ra:90
LENS:PM-1083A 24R
DRIVER:9290 028 088 350mA
30minutes warm-up

LED Avg.L Report

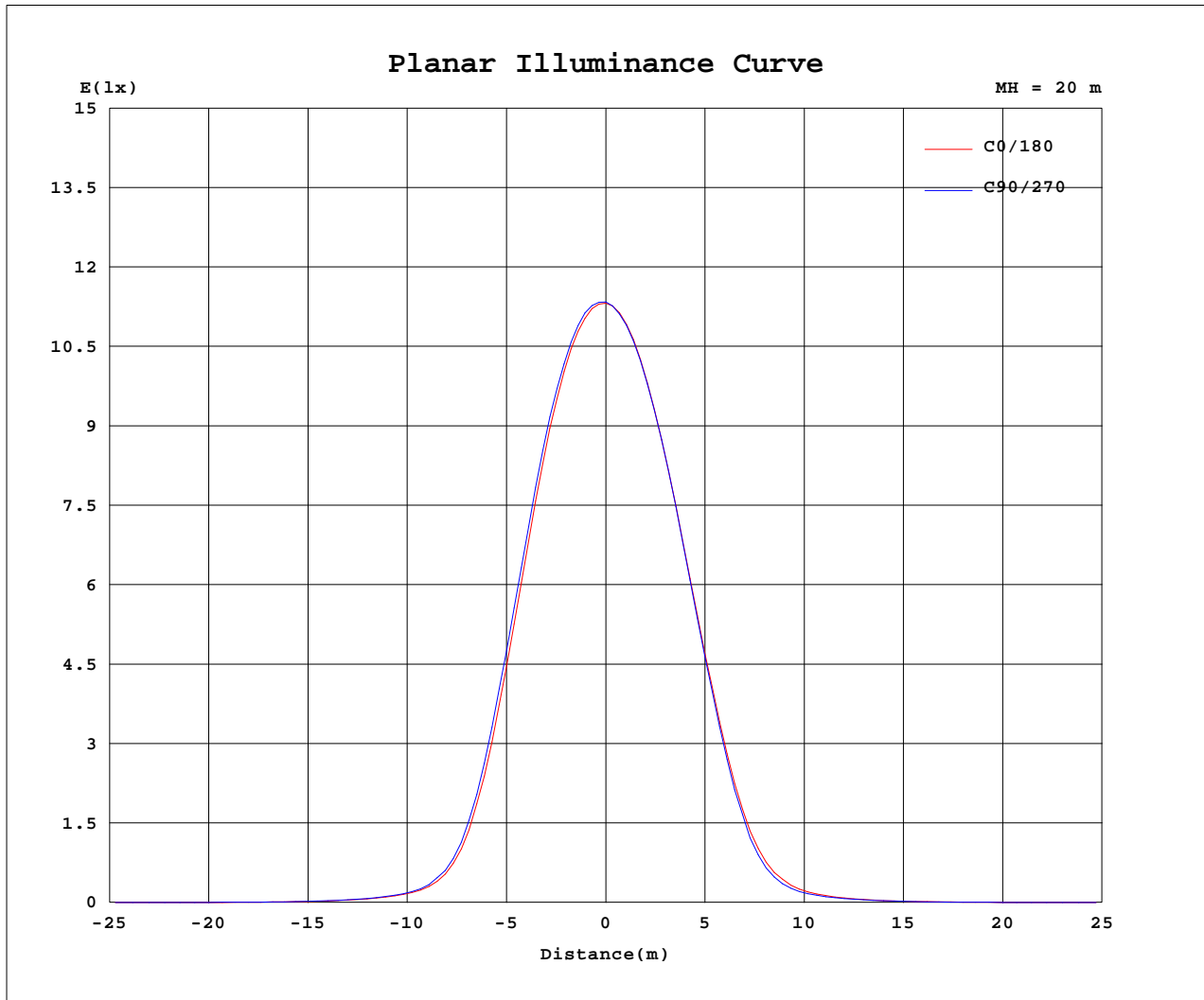
Test:U:220.02V I:0.0756A P:16.409W PF:0.9847 Freq:49.99Hz Lamp Flux:1099.47x1 lm		
NAME: 2118.574-ACOT-36	TYPE:	WEIGHT:
SPEC.: 3000K	DIM.:	SERIAL No.: 2309161163
MFR.: RISE	SUR.: 0.00138474m2	Shielding Angle:

AvgL	cd/m2
L_0~180(65)av	367
L_0~180(75)av	193
L_0~180(85)av	272
L_90~270(65)av	365
L_90~270(75)av	182
L_90~270(85)av	252
L_45(65)av	361
L_45(75)av	158
L_45(85)av	131

Standard: GB/T 29293-2012

C Range: 0 - 360DEG
C Interval: 30.0DEG
Test Speed: HIGH
Temperature:25.3℃
Operators:zoe
Test Date:2023-9-16

Range: 0 - 180DEG
Interval: 1.0DEG
Test System:EVERFINE GO-SPEX500_V1 SYSTEM V2.00.461
Humidity:65.0%
Test Distance:3.160m [K=1.0000]
Remarks: LAMP:CMA1306-0000-000N0U0A30G Ra:90
LENS:PM-1083A 24R
DRIVER:9290 028 088 350mA
30minutes warm-up

Planar Illuminance Curve

C Range: 0 - 360DEG
C Interval: 30.0DEG
Test Speed: HIGH
Temperature: 25.3 °C
Operators: zoe
Test Date: 2023-9-16

Range: 0 - 180DEG
Interval: 1.0DEG
Test System: EVERFINE GO-SPEX500_V1 SYSTEM V2.00.461
Humidity: 65.0%
Test Distance: 3.160m [K=1.0000]
Remarks: LAMP: CMA1306-0000-000N0U0A30G Ra:90
LENS: PM-1083A 24R
DRIVER: 9290 028 088 350mA
30minutes warm-up



LUMINOUS DISTRIBUTION INTENSITY DATA

Test:U:220.02V I:0.0756A P:16.409W PF:0.9847 Freq:49.99Hz Lamp Flux:1099.47x1 lm		
NAME: 2118.574-ACOT-36	TYPE:	WEIGHT:
SPEC.: 3000K	DIM.:	SERIAL No.: 2309161163
MFR.: RISE	SUR.: 0.00138474m2	Shielding Angle:

Table--1

UNIT: cd

C(DEG) (DEG)	0	30	60	90	120	150	180	210	240	270	300	330						
0	4536	4536	4536	4536	4536	4536	4536	4536	4536	4536	4536	4536						
5	4237	4280	4287	4281	4256	4218	4156	4124	4129	4142	4163	4195						
10	3183	3258	3269	3285	3271	3237	3145	3112	3137	3132	3123	3148						
15	1663	1723	1731	1793	1805	1826	1809	1782	1813	1769	1691	1683						
20	489	516	510	551	571	620	653	655	644	587	529	509						
25	128	134	132	140	140	154	176	178	163	145	131	125						
30	53.7	55.9	56.4	58.7	56.9	59.9	66.7	65.7	61.9	57.4	52.7	50.9						
35	24.0	25.1	25.5	26.7	26.0	27.2	29.1	28.4	27.6	25.8	24.2	23.4						
40	10.9	11.5	11.9	12.3	12.2	12.4	13.2	12.7	12.6	11.8	11.3	10.6						
45	4.89	5.20	5.32	5.53	5.56	5.60	5.94	5.64	5.70	5.35	5.23	4.62						
50	2.39	2.45	2.43	2.59	2.62	2.57	2.63	2.48	2.56	2.48	2.46	2.28						
55	1.10	1.05	1.02	1.08	1.11	1.11	1.16	1.14	1.17	1.12	1.09	1.02						
60	0.49	0.45	0.42	0.47	0.49	0.47	0.49	0.52	0.50	0.48	0.48	0.45						
65	0.20	0.21	0.21	0.21	0.22	0.22	0.22	0.22	0.21	0.21	0.21	0.20						
70	0.11	0.10	0.11	0.12	0.12	0.12	0.13	0.12	0.12	0.12	0.11	0.10						
75	0.06	0.05	0.05	0.06	0.06	0.07	0.07	0.07	0.06	0.07	0.05	0.05						
80	0.04	0.03	0.03	0.04	0.03	0.04	0.05	0.04	0.04	0.05	0.03	0.03						
85	0.03	0.01	0.01	0.03	0.02	0.02	0.04	0.02	0.02	0.03	0.02	0.02						
90	0.00	0.00	0.00	0.00	0.00	0.00	0.00	0.00	0.00	0.00	0.00	0.00						
95	0.00	0.00	0.00	0.00	0.00	0.00	0.00	0.00	0.00	0.00	0.00	0.00						
100	0.00	0.00	0.00	0.00	0.00	0.00	0.00	0.00	0.00	0.00	0.00	0.00						
105	0.00	0.00	0.00	0.00	0.00	0.00	0.00	0.00	0.00	0.00	0.00	0.00						
110	0.00	0.00	0.00	0.00	0.00	0.00	0.00	0.00	0.00	0.00	0.00	0.00						
115	0.00	0.00	0.00	0.00	0.00	0.00	0.00	0.00	0.00	0.00	0.00	0.00						
120	0.00	0.00	0.00	0.00	0.00	0.00	0.00	0.00	0.00	0.00	0.00	0.00						
125	0.00	0.00	0.00	0.00	0.00	0.00	0.00	0.00	0.00	0.00	0.00	0.00						
130	0.00	0.00	0.00	0.00	0.00	0.00	0.00	0.00	0.00	0.00	0.00	0.00						
135	0.00	0.00	0.00	0.00	0.00	0.00	0.00	0.00	0.00	0.00	0.00	0.00						
140	0.00	0.00	0.00	0.00	0.00	0.00	0.00	0.00	0.00	0.00	0.00	0.00						
145	0.00	0.00	0.00	0.00	0.00	0.00	0.00	0.00	0.00	0.00	0.00	0.00						
150	0.00	0.00	0.00	0.00	0.00	0.00	0.00	0.00	0.00	0.00	0.00	0.00						
155	0.00	0.00	0.00	0.00	0.00	0.00	0.00	0.00	0.00	0.00	0.00	0.00						
160	0.00	0.00	0.00	0.00	0.00	0.00	0.00	0.00	0.00	0.00	0.00	0.00						
165	0.00	0.00	0.00	0.00	0.00	0.00	0.00	0.00	0.00	0.00	0.00	0.00						
170	0.00	0.00	0.00	0.00	0.00	0.00	0.00	0.00	0.00	0.00	0.00	0.00						
175	0.00	0.00	0.00	0.00	0.00	0.00	0.00	0.00	0.00	0.00	0.00	0.00						
180	0.00	0.00	0.00	0.00	0.00	0.00	0.00	0.00	0.00	0.00	0.00	0.00						

C Range: 0 - 360DEG
C Interval: 30.0DEG
Test Speed: HIGH
Temperature:25.3℃
Operators:zoe
Test Date:2023-9-16

Range: 0 - 180DEG
Interval: 1.0DEG
Test System:EVERFINE GO-SPEX500_V1 SYSTEM V2.00.461
Humidity:65.0%
Test Distance:3.160m [K=1.0000]
Remarks: LAMP:CMA1306-0000-000N0U0A30G Ra:90
LENS:PM-1083A 24R
DRIVER:9290 028 088 350mA
30minutes warm-up